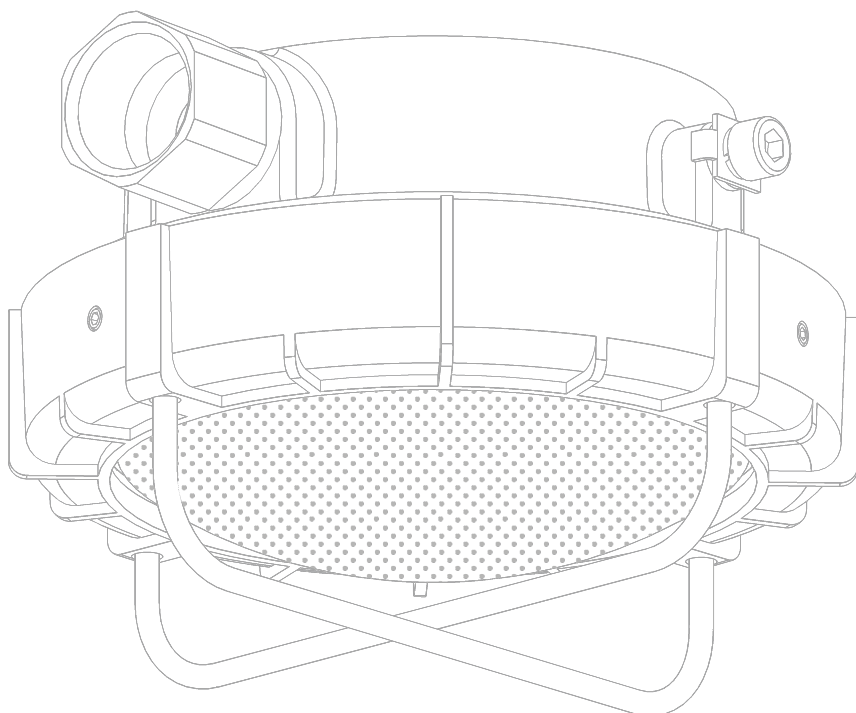
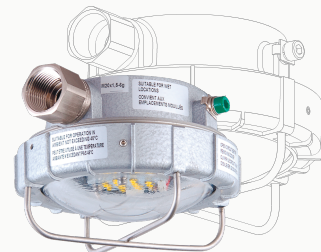


A R C U S

PFD-EX LED LUMINAIRES

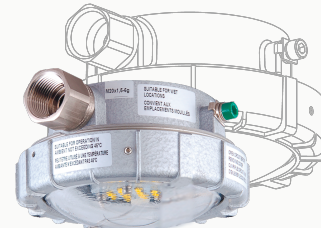


PLAFOND™ FOR EX



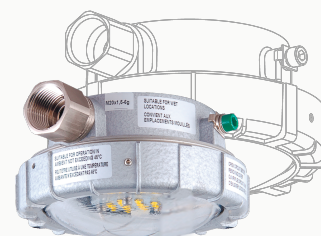
EXPLOSION PROOF


PLAFOND™ FOR HL



HAZARDOUS LOCATION


PLAFOND™ FOR IL



INDUSTRIAL LOCATION


SPECIFICATION

MODEL WATTAGE	20W
LUMEN OUTPUT	2500 LM•
DIMENSIONS	5.7 X 3.7 (145MM X 95MM)
NET FIXTURE WEIGHT	3.3 LBS (1.5 KG)
ENCLOSURE MATERIAL	Copper free aluminum alloy
FINISH	Polyester powder coat finish
HARDWARE AND MOUNTING	Marine grade stainless steel parts and screws
CABLE GLANDS AND CONNECTORS	Classified for CID1 nickel plated brass adapter from M20 to 3/4"
LENS	Tempered clear borosilicate glass
LIGHT SOURCE	High Power CREE LEDs
COLOR RENDITION INDEX (CRI)	> 70
INPUT POWER (+25°C)	20W
FIXTURE EFFICIENCY	125 LPW
LED DRIVER	Custom made, 120-277 VAC, 50/60Hz; 230-370 VDC; MEAN WELL 15-30 VDC
LED DRIVER PROTECTION	Overload, over-temperature and short-circuit protection
SURGE PROTECTION	1kV
POWER FACTOR	> 0.95
THD (total harmonic distortion)	<30%
INRUSH CURRENT	15A
AMBIENT OPERATING TEMPERATURE	-40°C TO +45°C
T-RATING (+45°C)	T5
FIXTURE LIFE (+25°C)	70 000 hours
FIXTURE LIFE (+45°C)	40 000 hours
FIXTURE LIFE (+55°C)	N/A
ACCESSORIES (order separately)	N/A
WARRANTY	5Years

• - Measurement tolerance +/- 10%

ETL/cETL CERTIFIED TO:

UL 844 for Use in Hazardous
(Classified) Locations
UL 1598 Suitable for Wet Locations
UL 1598A Marine Outside Type
(Saltwater)
CSA C22.2 No. 250.0
CSA C22.2 No. 137
IP66 rated per IEC 60598-1 |
-40°C to +45°C

APPROVED FOR:

Class I Division 1 Groups C, D
Class I Division 2 Groups A, B, C, D
Class I Zone 2 Group IIC
Class II Division 1 and 2 Groups E, F
Class II Zone 20, 21, or 22 Group IIB
Class III
1Ex d IIC T5 | -40°C to +45°C

ARCUS PFD-EX LED BENEFITS:

- Instant illumination and restrike
- Extreme compact size and weight
- Energy-efficient/up to 65% savings when compared to traditional HID lighting
- Up to 23 years (at 12hrs a day) of light, eliminating bulb and ballast replacement maintenance
- Operating ambient -40°C to +45°C
- 5 year warranty
- High CRI for improved visibility and clarity
- Damn near bullet proof

APPLICATION

Jelly Jar replacements
CID1 Explosion Proof Location
Locations requiring continuous and consistent light levels in extreme heat or cold.
Hazardous Storage
Marine, Engine and Battery Rooms

ORDERING INFORMATION: PART NUMBER EXAMPLE PFD-EX-SS-GM-RV-120-5K-20W-S

1	PFD	2	EX	3	SS	4	GM	5	RV	6	120	7	5K	8	20W	9	S
---	-----	---	----	---	----	---	----	---	----	---	-----	---	----	---	-----	---	---

DETAILED INFORMATION

2 FAMILY NAME ENCLOSURE TYPE EX Explosion Proof Rated Body	3 MOUNTING SS Surface Secured (Standard) UC Universal Surface HB Wall Mount Bracket	4 REFLECTOR GM Borosilicate glass and mesh guard	5 VOLTAGE RV 120-277 VAC, 50/60 Hz LV 15-30 VDC
6 SECONDARY OPTICS 120° Full Flood (No Optics - Standard)	7 COLOR TEMPERATURE 3K 3000K Warm Yellow 4K 4000K Warm White 5K 5000K Cool White (Standard)	8 WATTAGE 20W	9 BODY COLOR S Silver (Standard)

PROJECT INFORMATION

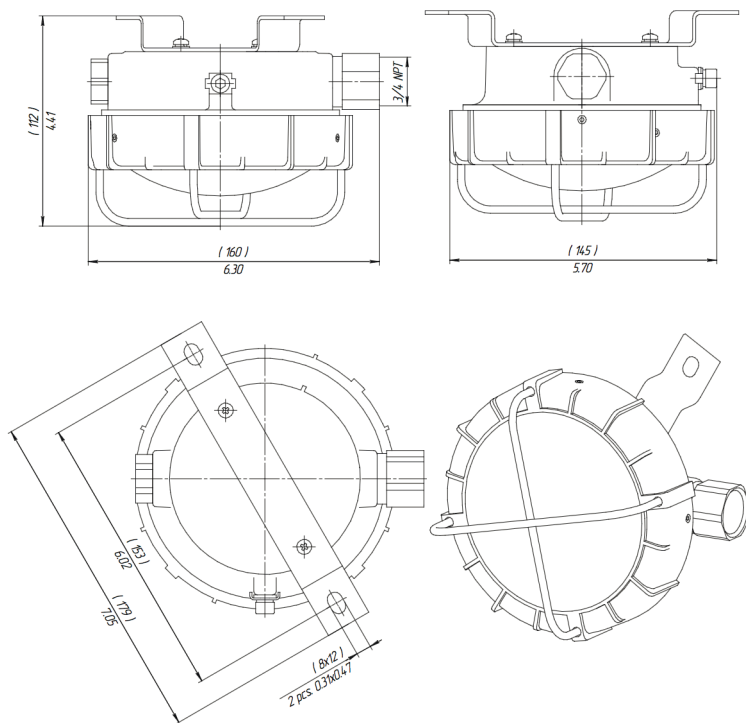
PROJECT NAME:
LOCATION:
DESCRIPTION:

CONTACT INFORMATION:

NAME:	E-MAIL:
PHONE:	DATE:

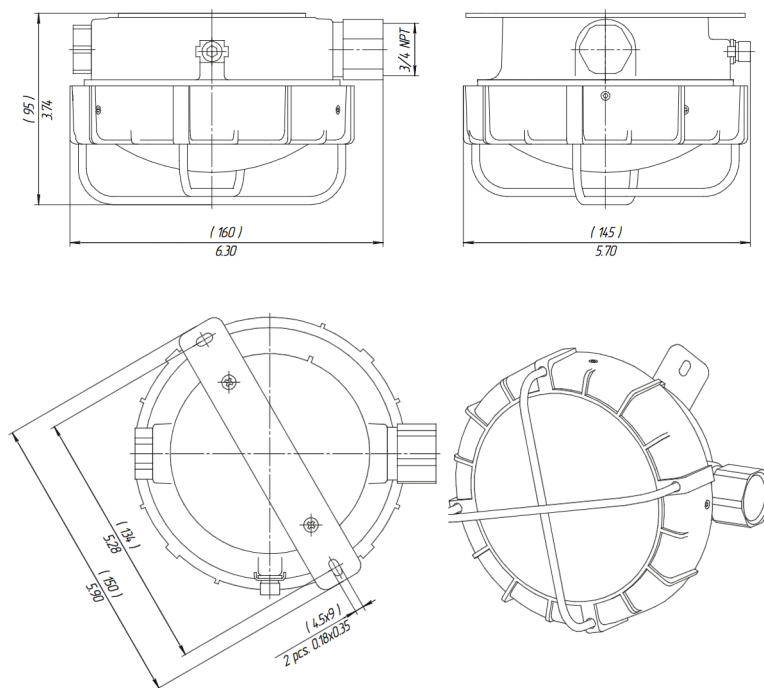
PFD-EX (SS BRACKET)

FIXTURE WEIGHT:
3,53 lb (1,6 kg)



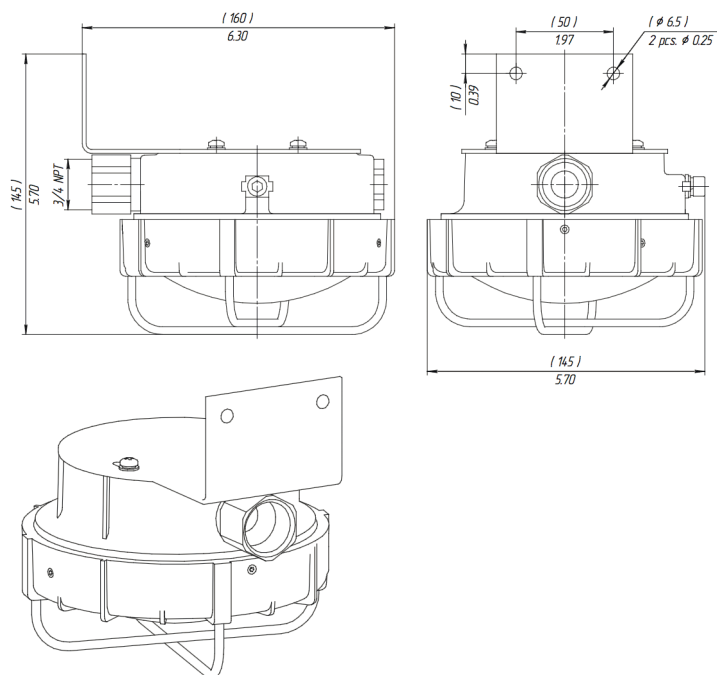
PFD-EX (UC BRACKET)

FIXTURE WEIGHT:
3,44 lb (1,56 kg)



PFD-EX (HB BRACKET)

FIXTURE WEIGHT:
3,82 lb (1,73 kg)





CONTACTS

(858) 353-1073

SALES@ARCUSLIGHT.COM

10457 ROSELLE STREET, SUITE #E
SAN DIEGO, CA 92121