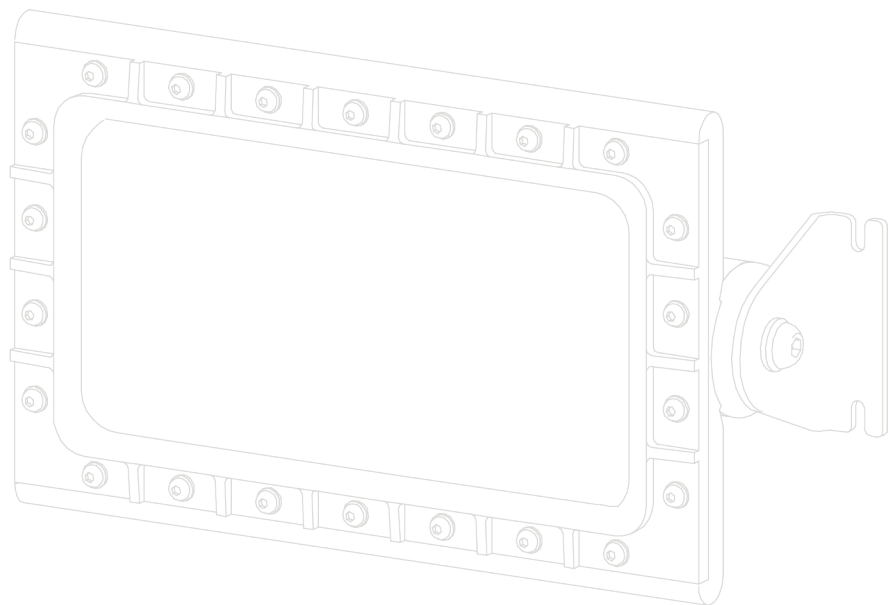
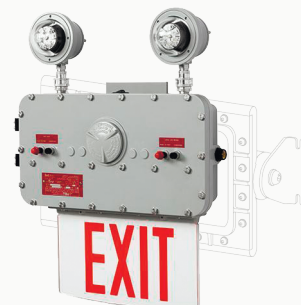


A R C U S

# TAB-EX LED LUMINAIRES

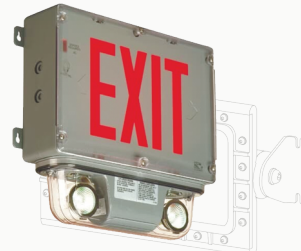


TABLEX™ FOR EX



EXPLOSION PROOF  


TABLEX™ FOR HL



HAZARDOUS LOCATION  


TABLEX™ FOR IL



INDUSTRIAL LOCATION  


## SPECIFICATION

	RED 6.5 W	GREEN 7.0 W
MODEL WATTAGE		
TOTAL LUMENS PER HEAD	TOTAL LUMENS PER HEAD	
OUTPUT WATTS PER HEAD	4.83 W	
EFFICACY (LM/W)	87.12	
CRI (COLOR RENDITION INDEX)	72	
CCT	5672	
DIMENSIONS	19.75 x 5.63 x 23.88 in (501.65 x 143.00 x 606.55 mm)	
WEIGHT	40.5 LBS	
ENCLOSURE MATERIAL	BODY: A360 ALUMINUM (LESS THAN .4% COPPER CONTENT) WITH BAKED-ON GRAY EPOXY FINISH) GASKET: ONE-PIECE NEOPRENE SIGN: ACRYLIC HARDWARE: STAINLESS STEEL	
MOUNTING	WALL MOUNTING, PENDANT MOUNTING, END MOUNTING	
OPTICS	WIDE NARROW-BEAM	
LED OPTIONS	RED	GREEN
AMBIENT TEMPERATURE RANGE	10 °C TO 45 °C	10 °C TO 35 °C
VOLTAGE/FREQUENCY	120 / 277 V 60HZ 220 – 240 V 50 HZ	
T-RATING	CIDI GROUPS C&D   T6 CIIDI GROUPS E,F,G, CLASS III   T6 SIMULTANEOUS, PRESENCE CLASS   I&II   T6	

## ETL/cETL CERTIFIED TO:

USCG Regulation 46 CFR Subparts  
 111.75-15(e) & 112.43  
 UL 844 Hazardous Locations  
 UL 1598A Marine Outside Type  
 UL 1598 Wet Locations  
 UL 8750 LED Safety  
 UL 924 Emergency Lighting  
 CUL  
 IP65  
 NEMA 4X

## APPROVED FOR:

Class I, Division 1, Groups C & D  
 Class II, Division 1, Groups E, F & G  
 Class III  
 Class I, Zone 1, Groups IIA, IIB

## ARCUS Tab-EX LED BENEFITS:

Two high lumen spot lights can be adjusted in horizontal  
 and vertical planes  
 Independent battery backup system for exit signs and spotlights  
 Unit can power up to two optional remote spot lights  
 Field replaceable LED circuit boards and drivers with  
 quick disconnects  
 Emergency battery back-up integral to sign  
 (no additional enclosure required)  
 3-hour emergency operation  
 Edge-lit sign

## APPLICATION

Waste Water Treatment  
 Oil and Gas Refining  
 Hazardous Locations  
 Hazardous Storage  
 Marine, Engine and Battery Rooms  
 Manufacturing Facilities

## ORDERING INFORMATION: PART NUMBER EXAMPLE TAB-EX-WM-1-RV-N-R-6,5-S

1 TAB	2 EX	3 WM	4 1	5 RV	6 N	7 R	8 6,5	9 S
-------	------	------	-----	------	-----	-----	-------	-----

## DETAILED INFORMATION

<b>2 FAMILY NAME</b> <b>ENCLOSURE TYPE</b> <b>EX</b> (Explosion Proof Rated Body)	<b>3 MOUNTING</b> <b>WM</b> Wall Mount <b>CM</b> Ceiling Mount	<b>4 NUMBER OF FACES</b> 1 2	<b>5 VOLTAGE</b> <b>RV</b> 120-277 VAC, 60 Hz <b>EV</b> 220-240 VAC, 50 Hz
<b>6 OPTICS</b> <b>N</b> Narrow <b>W</b> Wide	<b>7 LEGEND COLOR</b> <b>R</b> Red <b>G</b> Green	<b>8 WATTAGE</b> <b>6,5W</b> (Red) <b>7,0W</b> (Green)	<b>9 BODY COLOR</b> <b>S</b> Silver (Standard)

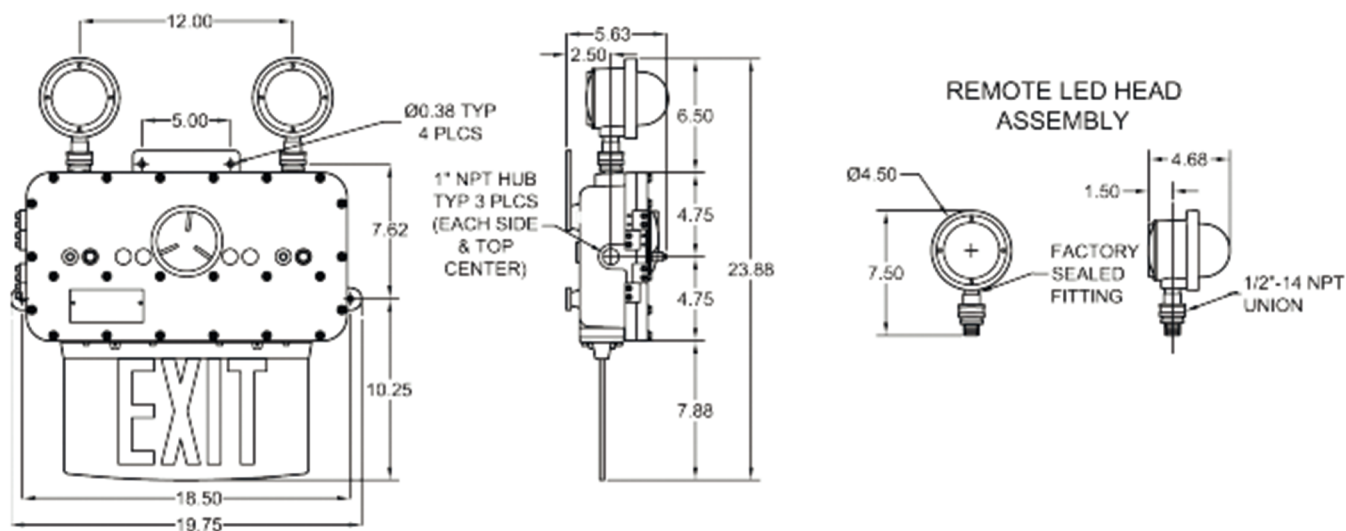
## PROJECT INFORMATION

PROJECT NAME:
LOCATION:
DESCRIPTION:

## CONTACT INFORMATION:

NAME:	E-MAIL:
PHONE:	DATE:

**TAB-EX**





**(858) 353-1073**

SALES@ARCUSLIGHT.COM

10457 ROSELLE STREET, SUITE #E  
SAN DIEGO, CA 92121