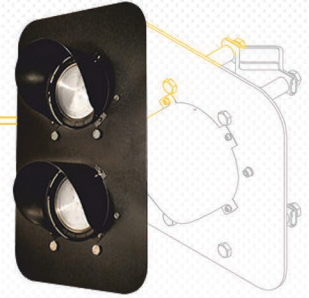


The TraffEx™ Series is designed for indoor or outdoor Industrial Traffic Signaling in Class I Division 1 Hazardous Locations including Heavy Duty Wet Locations and Marine Environment.

It has a unique design that combines lighting and industrial safety cutting-edge technology. It is the one and only explosion proof traffic light with intuitive design based on actual traffic light features that generates instant psychological response.

### ALL PRODUCTS ARE SUITABLE FOR USE IN THE FOLLOWING LOCATIONS:

- Hazardous Location as per UL 844 (CSA C22.2 No. 137)
- Dry and Wet Locations as per UL 1598
- Outdoor Type (Salt Water) as per UL 1598A (CSA C22.2 No. 250.0-08)



### WARNING:

- 1 Turn off any supplying power before wiring or opening already wired luminaires.
- 2 While cleaning, wipe the luminaire with moist fabric only to avoid occurrence of electrostatic charging.
- 3 Make sure the supply voltage is the same as the rated luminaire voltage.
- 4 Do not operate in ambient temperatures above those indicated on the luminaire nameplate.

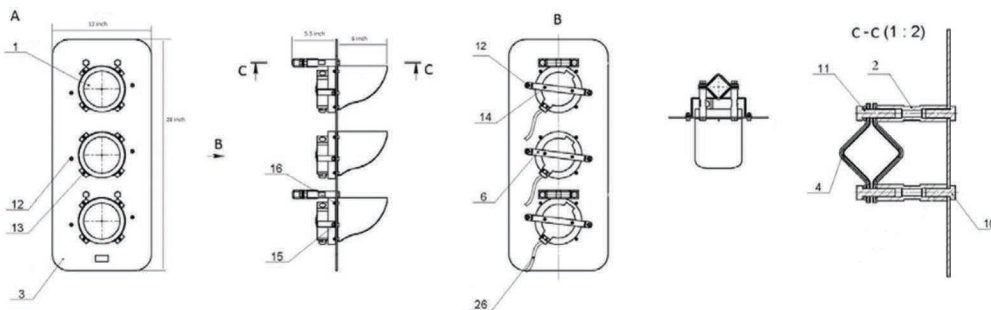
**PLEASE READ ALL INSTRUCTIONS CAREFULLY BEFORE BEGINNING THE INSTALLATION!**

**NOTE (!):** This product must be installed in accordance with the applicable installation code by a person familiar with the construction and operation of the product and the hazards involved.

## PART I. TRAFFEX™ INSTALLATION AND MOUNT

- 1 **Important (!):** Prepare a clean surface to keep parts during assembly.
- 2 Uninstall first lighting fixture (1), Fig. 1 A by removing two screws (12) that hold the fixture bracket (14) in place. Keep screws, nuts and washers safe.
- 3 Go to the Parts II and III of this manual for instructions to connect cable (26) to Class I Division 2 cable gland and to wire each lighting fixture.
- 4 Once connected and wired, install first lighting fixture back to the traffic light enclosure frame using screws, washers and nuts (12, 15).
- 5 Repeat the above with other lighting fixtures.
- 6 Loosen four screws M10 (11) used for both mounting brackets and install the Traffic Light on conduit of 55-60 mm diameter. Tighten the screws as needed to position the traffic light safely.

**FIG. 1 TRAFFEX™ ASSEMBLY. CID1-TRFX(RYG)-45W**



### PART I. FIXTURE WIRING

1. Unscrew all stopper screws (2) then turn the Plafond face down and unscrew its lid-diffuser sandwich (1), carefully remove it from Plafond's enclosure, and place on prepared clean surface.  
**Warning (!):** the lid-diffuser sandwich components are not connected, be careful and keep them together.
2. Remove holding PCB screw (3), carefully remove the PCB, and place it on prepared clean surface.
3. If the TraffEx™ fixtures come with pre-installed M20S-to-NPT 3/4" or 1/2" adapters to be used with end user's Class I Division 1 cable glands, please, follow corresponding cable gland installation manual that comes with those cable glands. If the TraffEx™ light fixtures are supplied with CID1 cable glands, please, proceed to the Part III ("Cable Installation into Cable Gland") of this installation manual then proceed to the next step 4.
4. Once the cable is installed into the CID1 cable gland connect cable power wire to terminal (5), Fig 2, marked "-L" and neutral wire to the terminal (5) marked "-N" on the driver's PCB. Connect internal ground wire to ground screw-in type connector (6), and the external ground wire to the ground screw-in type connector (8) as shown on Fig 2.
5. Assemble the TraffEx™ fixture in reverse order (steps 2-1). Important (!): An additional seal is required for IP66. Install supplied with the TraffEx™ light rubber seal into the groove located on the inside of the diffuser-holding ring as shown on the Fig 3.
6. The fixture is ready to be used.

FIG.2 FIXTURE WIRING ANDASSEMBLY

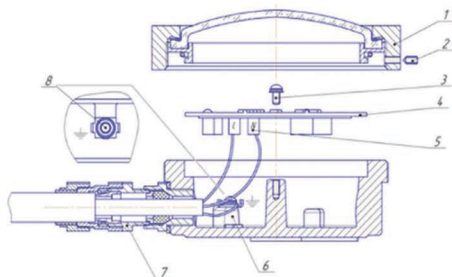
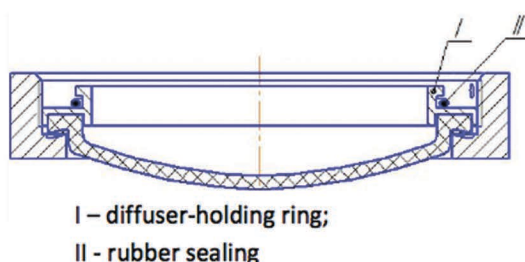


FIG.3 INSTALLATION OF THE IP66 SEALING



### CABLE INSTALLATION INTO THE CID1 OR C1D2 CABLE GLAND

1. Untighten the outer seal nut
2. Prepare size range 12 - 18 AWG cable wires for connecting to the fixture terminals by stripping back few millimeters of each wire sheath to suite the terminal geometry. **(NOTE! 12 AWG is the maximum wire diameter to be used with the device terminals)**
3. Pass the size range 12-18 AWG cable through the cable gland inside the enclosure. **(NOTE! If other size cables are required different CID1 or C1D2 cable gland/grip can be used with appropriate ADAPTER to CABLE GLAND IP66 sealing)**
4. Connect the wires to the fixture terminals.
5. Tighten the outer seal nut. **(NOTE! Make sure all the components –adapter, sealing nut, cable grips are well tightened)**

