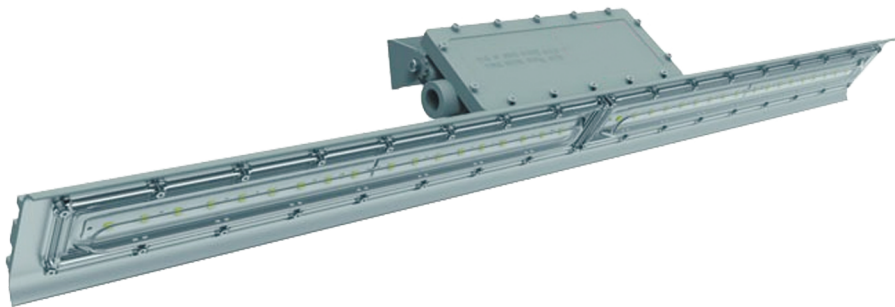
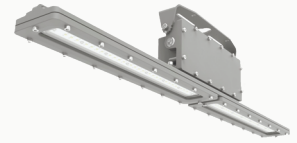


A R C U S

# LIN-IL LED LUMINARIES



LINEAR™ FOR EX



EXPLOSION PROOF



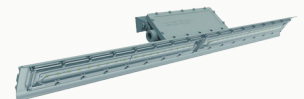
LINEAR™ FOR HL



HAZARDOUS LOCATION



LINEAR™ FOR IL



INDUSTRIAL LOCATION





## SPECIFICATION

	40 W	80 W	
RATED POWER	40 W	80 W	
INPUT VOLTAGE	AC 120-277V, AC 347-480V		
INPUT FREQUENCY	50/60 HZ		
INPUT CURRENT	AC 120-277V AC 347-480V	0.34/0.16A 0.13/0.09A	0.67/0.32A 0.25/0.18A
POWER FACTOR	≥ 0.95		
DRIVER EFFICIENCY	≥ 0.90		
LUMEN OUTPUT	5 480 Lm	10 960 Lm	
LUMENS PER WATT	137 Lm/W		
BEAM ANGLE	110°		
CORRELATED COLOR TEMPERATURE (CCT)	3 000 K 4 000 K 5 000 K		
COLOR RENDERING INDEX (CRI)	RA ≥ 70		
AMBIENT OPERATING HUMIDITY	5% ~ 95% RH		
AMBIENT OPERATING TEMPERATURE	-40 °C ~ +50 °C		
OPTIMAL OPERATING TEMPERATURE	25 °C		
T-CODE	CLASS I DIVISION 2: T3C CLASS II DIVISION 1: T4A Copper-free Aluminum		
HOUSING MATERIAL	Copper-free Aluminum		
LENS MATERIAL	Polycarbonate		
MOUNTING OPTIONS	CEILING MOUNT, WALL MOUNT, STANCHION STRAIGHT MOUNT, EYE-BOLT MOUNT, PENDANT MOUNT		
IP RATING	IP66		
IK RATING	IK08		

### ETL/cETL CERTIFIED TO:

**NEC/CEC STANDARD**

UL 844 & CSA C22.2 No. 137-M1981  
 UL 1598A Marine (Salt Water)  
 UL 1598 Wet Locations  
 UL 8750 LED Safety  
 DLC\*

\*Not all product variations listed on this page are DLC qualified\*  
 FCC

### APPROVED FOR:

Class I Division 2, Group A, B, C, D  
 Class II Division 1, Group E,F,G  
 Class III Division 1

### ARCUS LIN-IL LED BENEFITS:

- Best-in-class system efficacy up to 136 Lm/W
- Universal Voltage AC120-277V, AC347-480V (50/60Hz)
- Wide ambient temp. range from -40 °C to +50 °C (-40 °F ~ +122 °F)
- Safe and reliable heat transfer – Offering a T – rating of T3C (CID2)/T4A (CIID1)
- Instant on/off operation
- Shock- and vibration- resistant – Durable LEDs with solder-less board connection
- Copper-free aluminum body and corrosion resistant
- All exposed fasteners with quality stainless steel
- Thermal shock and impact resistant PC lens
- Slim and compact design

### APPLICATION

- Power Plants/Heavy Industrials
- Storage Facility/Paper Mills
- Wastewater Treatment Plants
- Loading Docks/Platforms/Ship-yards
- Chemical Processing Facility
- Petrochemical Processing Facility



**ORDERING INFORMATION:** PART NUMBER EXAMPLE LIN-IL-CM-T-RV-T5-3K-40W-S

1 LIN	2 IL	3 CM	4 T	5 RV	6 T5	7 3K	8 40W	9 S
-------	------	------	-----	------	------	------	-------	-----

**DETAILED INFORMATION**

**2 FAMILY NAME  
ENCLOSURE TYPE**

IL (Industrial locations rated body)

**3 MOUNTING SOLUTIONS**

- CM Ceiling mount
- WM Wall mount
- SS Stanchion straight mount
- EM Eye-bolt-mount
- PM Pendant mount

**4 REFLECTOR (LENS)**

- T Transparent PC
- F Diffuse PC

**5 VOLTAGE**

- RV 110 – 277 VAC
- HV 277 – 480 VAC

**6 BEAM ANGLE**

T5 110°

**7 COLOR TEMPERATURE**

- 3K 3 000 K
- 4K 4 000 K
- 5K 5 000 K

**8 WATTAGE**

- 40W
- 80W

**9 BODY COLOR**

S Silver

**PROJECT INFORMATION**

PROJECT NAME:

LOCATION:

DESCRIPTION:

**CONTACT INFORMATION:**

NAME:

E-MAIL:

PHONE:

DATE:



CONTACTS

**(858) 353-1073**

SALES@ARCUSLIGHT.COM

10457 ROSELLE STREET, SUITE #E  
SAN DIEGO, CA 92121