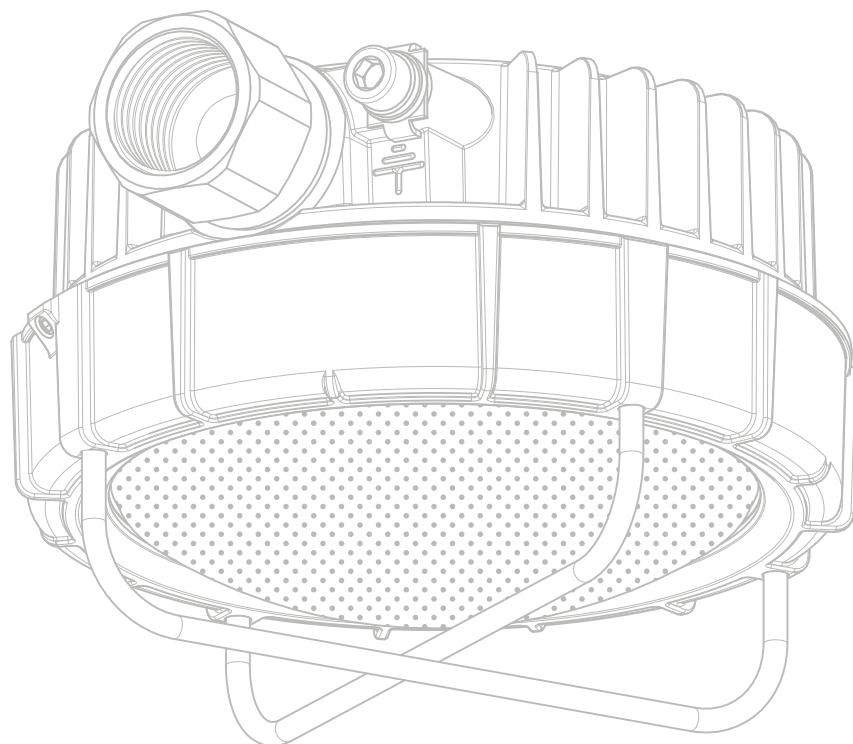
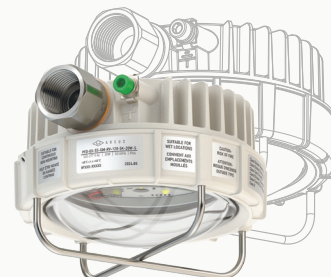


A R C U S

# PFD-EX LED LUMINAIRES

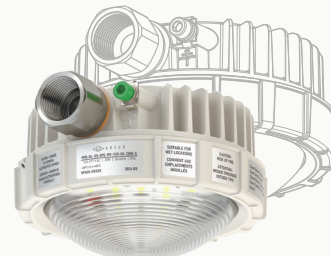


PLAFOND™ FOR EX



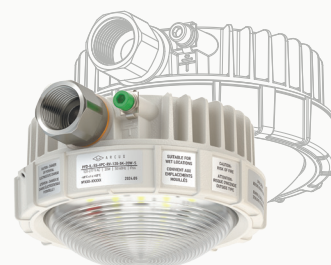
EXPLOSION PROOF  


PLAFOND™ FOR HL



HAZARDOUS LOCATION  


PLAFOND™ FOR IL



INDUSTRIAL LOCATION  


## SPECIFICATION

MODEL WATTAGE	20W
LUMEN OUTPUT	2700 LM•
DIMENSIONS	5.7 X 3.7 (145mm X 94mm)••
NET FIXTURE WEIGHT	3.4 lbs (1.55 kg)•
ENCLOSURE MATERIAL	Copper free aluminum alloy
FINISH	Polyester powder coat finish
HARDWARE AND MOUNTING	Marine grade stainless steel parts and screws
CABLE GLANDS AND CONNECTORS	Classified for CID1 nickel plated brass adapter from M20 to 3/4"
LENS	Tempered clear borosilicate glass
LIGHT SOURCE	High Power OSRAM LEDs
COLOR RENDITION INDEX (CRI)	> 70
INPUT POWER (+25°C)	20W
FIXTURE EFFICIENCY	130 LPW
LED DRIVER	Custom made, 120-277 VAC, 50/60Hz; 230-370 VDC; MEAN WELL 15-30 VDC
LED DRIVER PROTECTION	Overload, over-temperature and short-circuit protection
SURGE PROTECTION	1kV
POWER FACTOR	> 0.95
THD (total harmonic distortion)	<30%
INRUSH CURRENT	15A
AMBIENT OPERATING TEMPERATURE	-40°C TO +45°C
T-RATING (+45°C)	T5
FIXTURE LIFE (+25°C)	70 000 hours
FIXTURE LIFE (+45°C)	40 000 hours
FIXTURE LIFE (+55°C)	N/A
WARRANTY	5 Years

• - Measurement tolerance +/- 10%

•• - Excluding mounting module and cable glands

## ETL/cETL CERTIFIED TO:

UL 844 for Use in Hazardous  
(Classified) Locations  
UL 1598 Suitable for Wet Locations  
UL 1598A Marine Outside Type  
(Saltwater)  
CSA C22.2 No. 250.0  
CSA C22.2 No. 137  
IP66 rated per IEC 60598-1 |  
-40°C to +45°C

## APPROVED FOR:

Class I Division 1 Groups C, D  
Class I Division 2 Groups A, B, C, D  
Class I Zone 2 Group IIC  
Class II Division 1 and 2 Groups E, F  
Class II Zone 20, 21, or 22 Group IIB  
Class III  
1Ex d IIC T5 | -40°C to +45°C

## ARCUS PFD-EX LED BENEFITS:

- Instant illumination and restrike
- Extreme compact size and weight
- Energy-efficient/up to 65% savings when compared to traditional HID lighting
- Up to 23 years (at 12hrs a day) of light, eliminating bulb and ballast replacement maintenance
- Operating ambient -40°C to +45°C
- 5 year warranty
- High CRI for improved visibility and clarity
- Damn near bullet proof

## APPLICATION

Jelly Jar replacements  
CID1 Explosion Proof Location  
Locations requiring continuous and consistent light levels in extreme heat or cold.  
Hazardous Storage  
Marine, Engine and Battery Rooms

ORDERING INFORMATION: PART NUMBER EXAMPLE PFD-EX-SS-GM-RV-120-5K-20W-S

1 PFD

2 EX

3 SS

4 GM

5 RV

6 120

7 5K

8 20W

9 S

DETAILED INFORMATION

<div>2</div> <div>FAMILY NAME ENCLOSURE TYPE</div> <div>EX Explosion Proof Rated Body</div>	<div>3</div> <div>MOUNTING</div> <div>SS Surface Secured (Standard) UC Universal Surface HB Wall Mount Bracket TR Traffic Light Mounting Bracket</div>	<div>4</div> <div>REFLECTOR</div> <div>GM Borosilicate glass and mesh guard</div>	<div>5</div> <div>VOLTAGE</div> <div>RV 120-277 VAC, 50/60 Hz LV 15-30 VDC</div>
<div>6</div> <div>SECONDARY OPTICS</div> <div>120° Full Flood (No Optics - Standard)</div>	<div>7</div> <div>COLOR TEMPERATURE</div> <div>3K 3000K Warm Yellow 4K 4000K Warm White 5K 5000K Cool White (Standard)  R Red Y Yellow G Green</div>	<div>8</div> <div>WATTAGE</div> <div>20W</div>	<div>9</div> <div>BODY COLOR</div> <div>S Silver (Standard) B Black</div>

PROJECT INFORMATION

PROJECT NAME:

LOCATION:

DESCRIPTION:

CONTACT INFORMATION:

NAME:

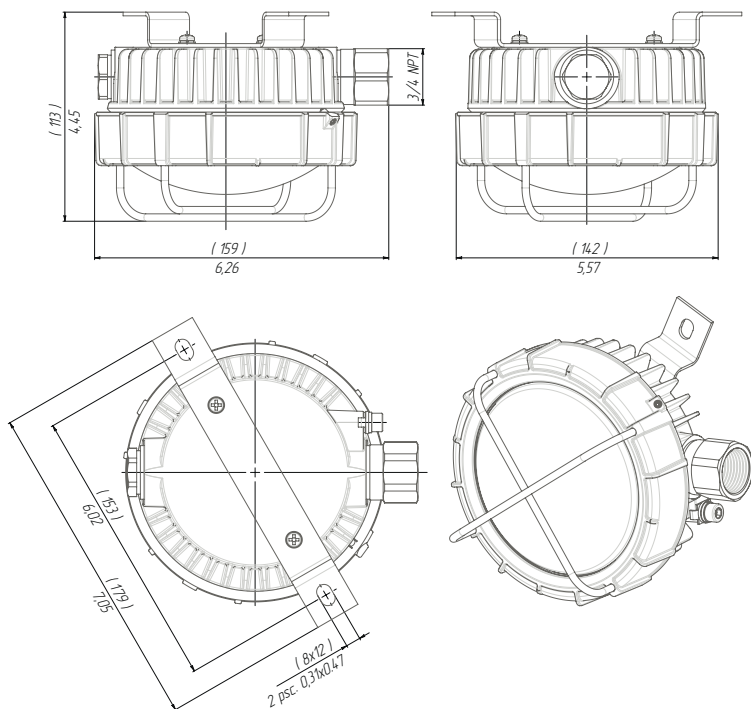
E-MAIL:

PHONE:

DATE:

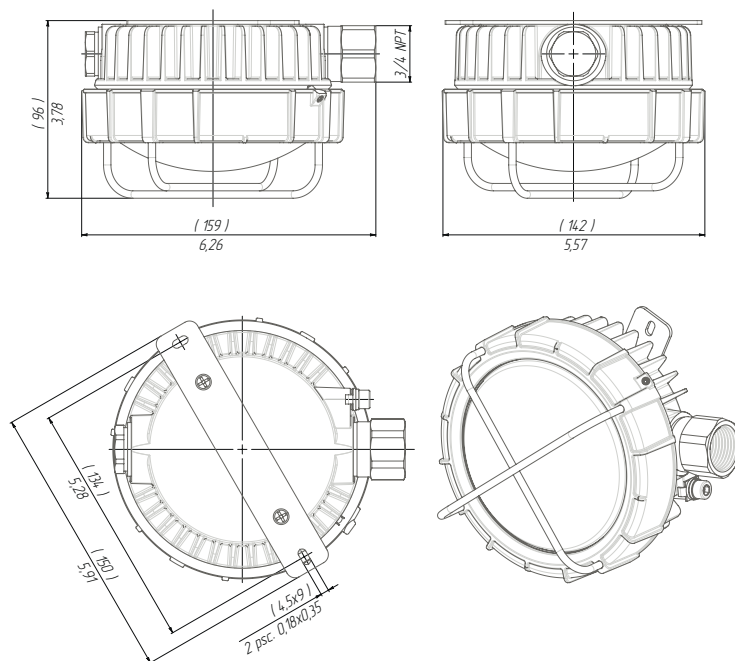
## PFD-EX (SS BRACKET)

FIXTURE WEIGHT:  
3,58 lb (1,62 kg)



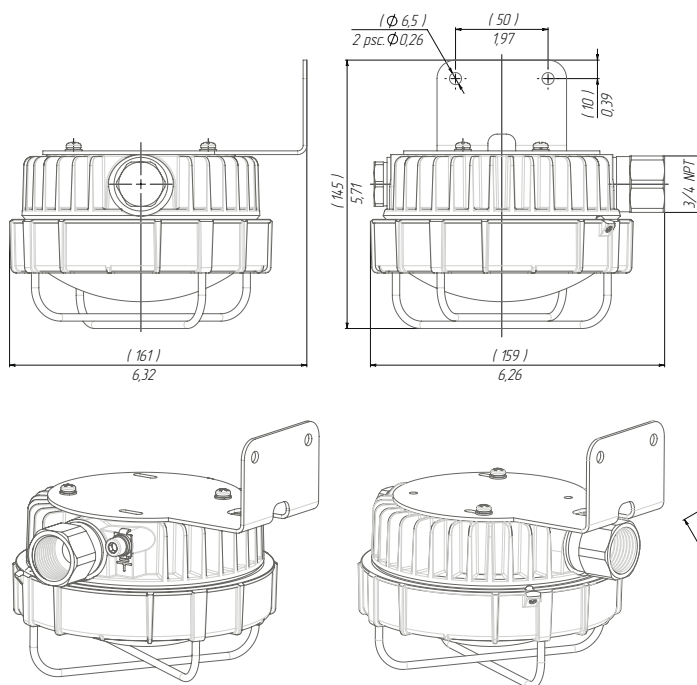
## PFD-EX (UC BRACKET)

FIXTURE WEIGHT:  
3,52 lb (1,6 kg)



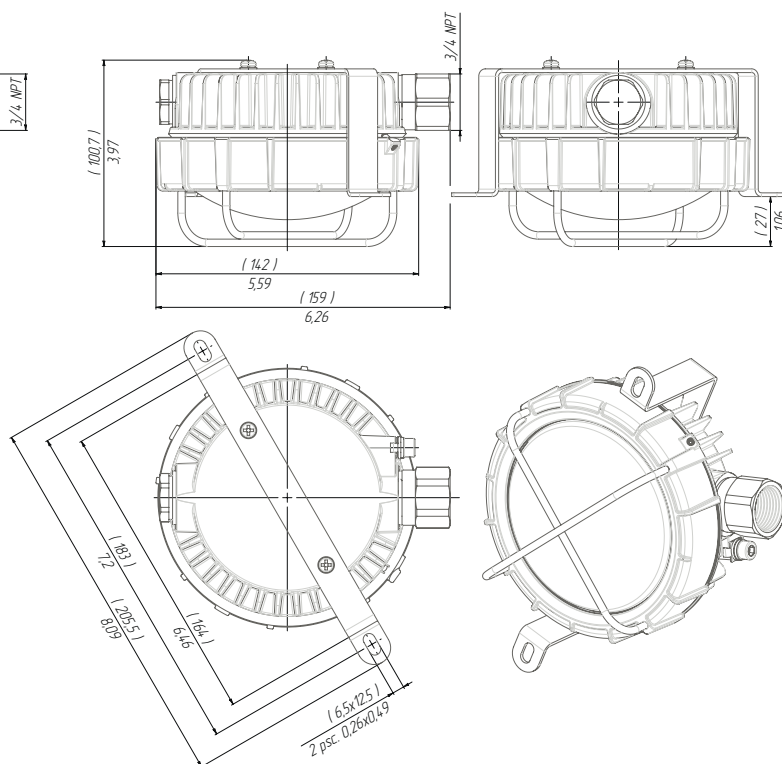
## PFD-EX (HB BRACKET)

FIXTURE WEIGHT:  
3,9 lb (1,77 kg)



## PFD-EX (TR BRACKET)

FIXTURE WEIGHT:  
3,6 lb (1,63 kg)





**(858) 353-1073**

SALES@ARCUSLIGHT.COM

PO BOX 3097,  
RANCHO SANTA FE, CA 92067