



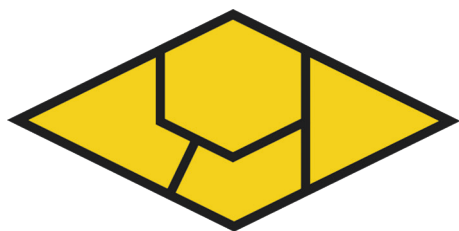
EXPLOSION PROOF



HAZARDOUS LOCATION

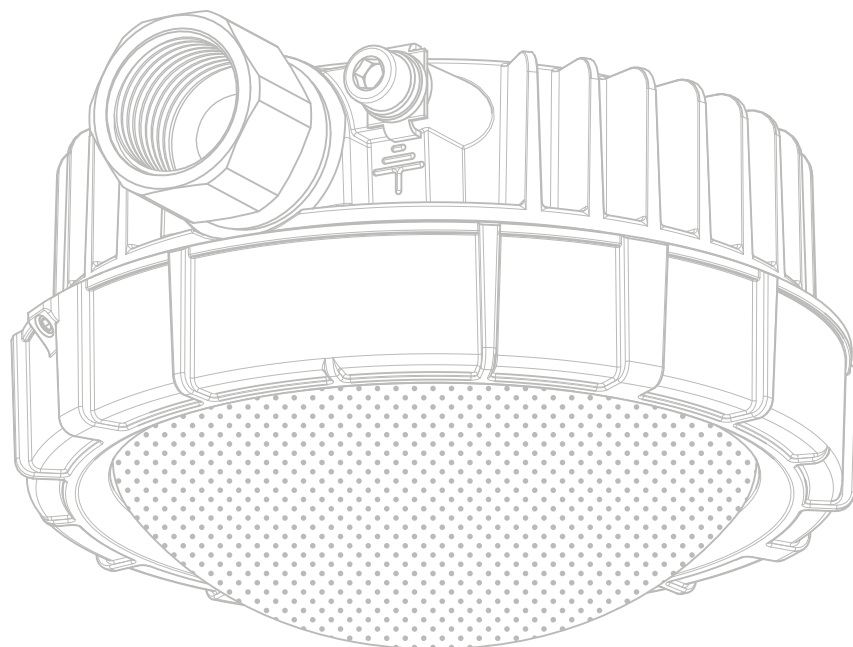


INDUSTRIAL LOCATION

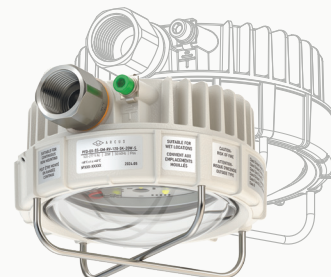


A R C U S

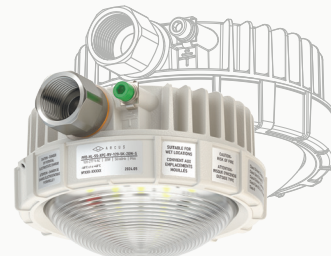
# PFD-IL LED LUMINAIRES



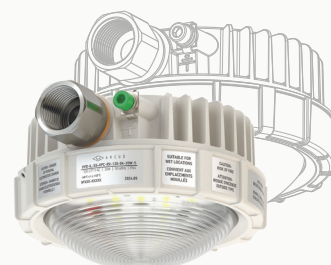
PLAFOND™ FOR EX



PLAFOND™ FOR HL



PLAFOND™ FOR IL



## SPECIFICATION

MODEL WATTAGE	20W
LUMEN OUTPUT	2 600 LM*
DIMENSIONS	5.7 X 3.25 (145mm X 83mm)**
NET FIXTURE WEIGHT	2.6 lbs (1.18 kg)*
ENCLOSURE MATERIAL	Copper free aluminum alloy
FINISH	Polyester powder coat finish
HARDWARE AND MOUNTING	Marine grade stainless steel parts and screws
CABLE GLANDS AND CONNECTORS	Classified for IP66 nickel plated brass adapter from M20 to 3/4"
LENS	Military Grade UL94 V-0 rated Lexan
LIGHT SOURCE	High Power OSRAM LEDs
COLOR RENDITION INDEX (CRI)	> 70
INPUT POWER (+25°C)	20W
FIXTURE EFFICIENCY	125 LPW
LED DRIVER	Custom made, 120-277 VAC, 50/60Hz; 230-370 VDC; MEAN WELL 15-30 VDC
LED DRIVER PROTECTION	Overload, over-temperature and short-circuit protection
SURGE PROTECTION	1kV
POWER FACTOR	> 0.95
THD (total harmonic distortion)	<30%
INRUSH CURRENT	15A
AMBIENT OPERATING TEMPERATURE	-40°C TO +45°C
T-RATING (+45°C)	T5
FIXTURE LIFE (+25°C)	70 000 hours
FIXTURE LIFE (+45°C)	40 000 hours
FIXTURE LIFE (+55°C)	N/A
WARRANTY	5 Years

\* - Measurement tolerance +/- 10%

\*\* - Excluding mounting module and cable glands

## ETL/cETL CERTIFIED TO:

UL 1598 Suitable for Wet Locations  
 UL 1598A Marine Outside Type  
 (Saltwater)  
 CSA C22.2 No. 250.0  
 CSA C22.2 No. 137  
 IP66 rated per IEC 60598-1 |  
 -40°C to +45°C

## ARCUS PFD-IL LED BENEFITS:

- Instant illumination and restrike
- Extreme compact size and weight
- Energy-efficient/up to 65% savings when compared to traditional HID lighting
- Up to 23 years (at 12hrs a day) of light, eliminating bulb and ballast replacement maintenance
- Operating ambient -40°C to +45°C
- 5 year warranty
- High CRI for improved visibility and clarity
- Damn near bullet proof

## APPLICATION

Jelly Jar replacements

Vapor proof

Locations requiring continuous and consistent light levels in extreme heat or cold.

Storages

Marine, Engine and Battery Rooms

## APPROVED FOR:

IP66  
 Dust proof, water resistant, high temperature and sub zero applications  
 Corrosive atmospheres, marine rated, extreme wet applications



ORDERING INFORMATION: PART NUMBER EXAMPLE PFD-IL-SS-XPC-RV-120-5K-20W-S

1 PFD

2 IL

3 SS

4 XPC

5 RV

6 120

7 5K

8 20W

9 S

DETAILED INFORMATION

<div>2</div> <div>FAMILY NAME ENCLOSURE TYPE</div> <div>IL Industrial Locations Rated Body</div>	<div>3</div> <div>MOUNTING</div> <div>SS Surface Secured (Standard) UC Universal Surface HB Wall Mount Bracket TR Traffic Light Mounting Bracket</div>	<div>4</div> <div>REFLECTOR</div> <div>XPC Extreme polycarbonate lens</div>	<div>5</div> <div>VOLTAGE</div> <div>RV 120-277 VAC, 50/60 Hz LV 15-30 VDC</div>
<div>6</div> <div>SECONDARY OPTICS</div> <div>120° Full Flood (No Optics - Standard)</div>	<div>7</div> <div>COLOR TEMPERATURE</div> <div>3K 3000K Warm Yellow 4K 4000K Warm White 5K 5000K Cool White (Standard)  R Red Y Yellow G Green</div>	<div>8</div> <div>WATTAGE LUMEN</div> <div>20W</div>	<div>9</div> <div>BODY COLOR</div> <div>S Silver (Standard) B Black</div>

PROJECT INFORMATION

PROJECT NAME:

LOCATION:

DESCRIPTION:

CONTACT INFORMATION:

NAME:

E-MAIL:

PHONE:

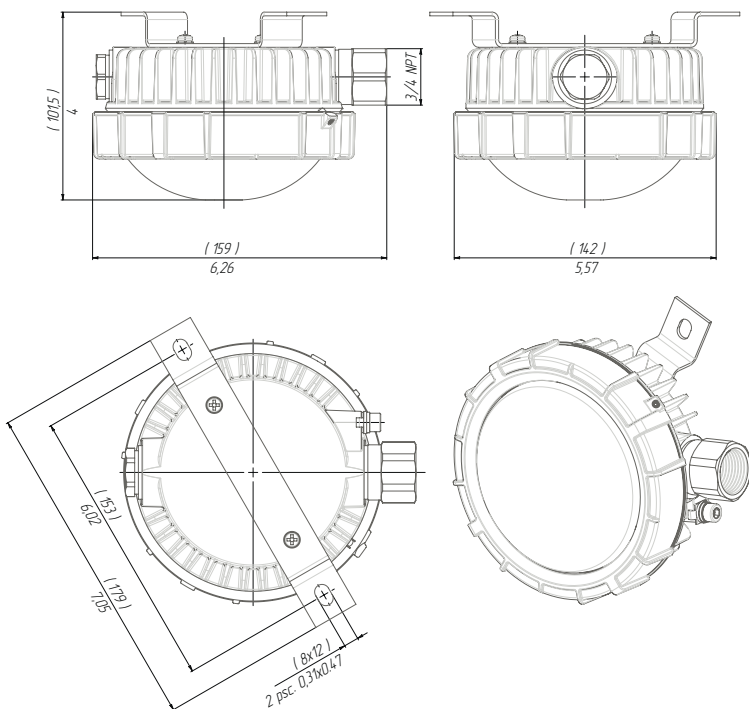
DATE:





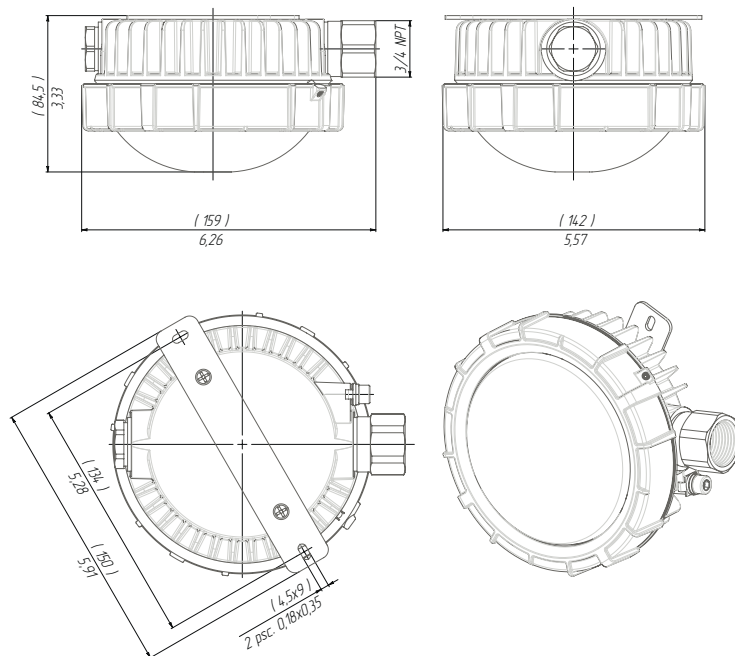
## PFD-IL (SS BRACKET)

FIXTURE WEIGHT:  
2,78 lb (1,26 kg)



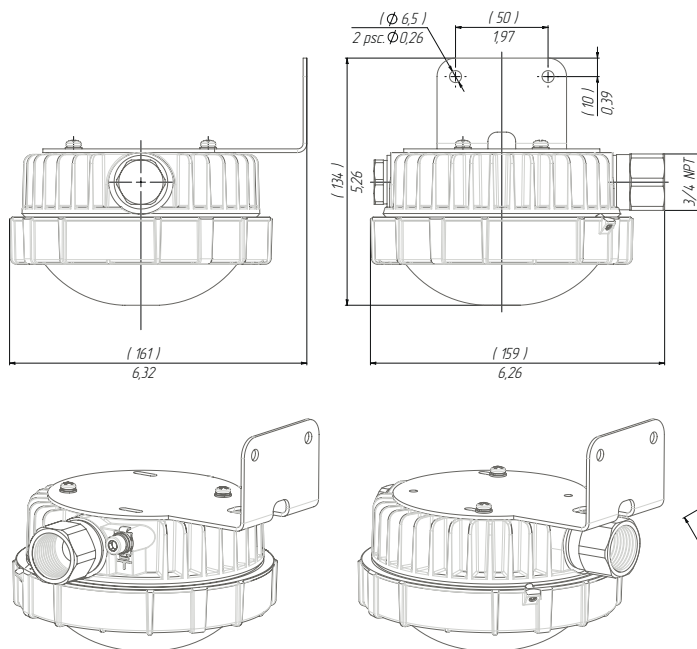
## PFD-IL (UC BRACKET)

FIXTURE WEIGHT:  
2,72 lb (1,24 kg)



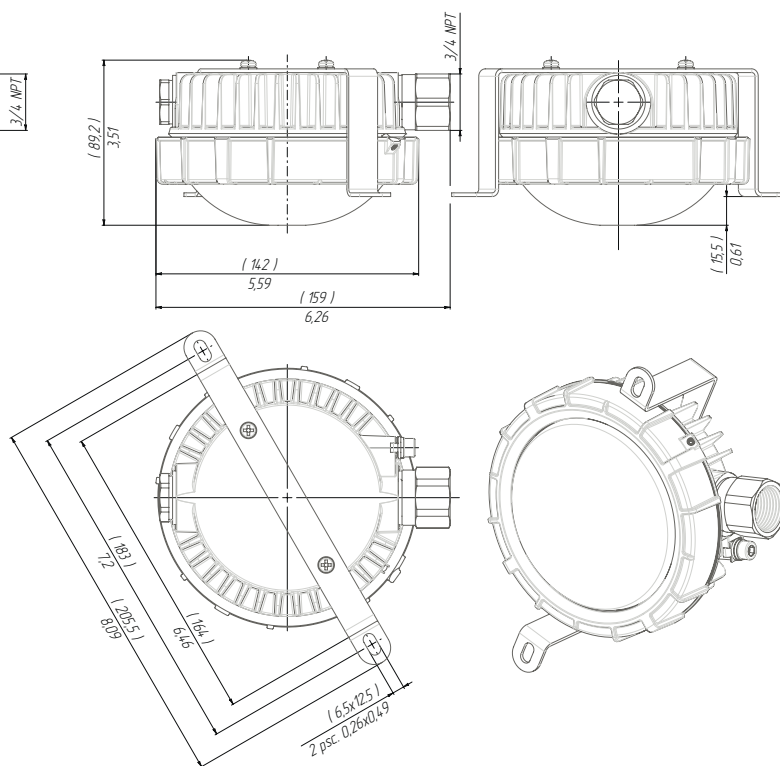
## PFD-IL (HB BRACKET)

FIXTURE WEIGHT:  
3,1 lb (1,41 kg)



## PFD-IL (TR BRACKET)

FIXTURE WEIGHT:  
2,81 lb (1,27 kg)





**(858) 353-1073**

[SALES@ARCUSLIGHT.COM](mailto:SALES@ARCUSLIGHT.COM)

PO BOX 3097,  
RANCHO SANTA FE, CA 92067